

# Sammy Hawker

## SALT

The Mixing Room Gallery, ACT

9 FEB UNTIL 25 MARCH '23



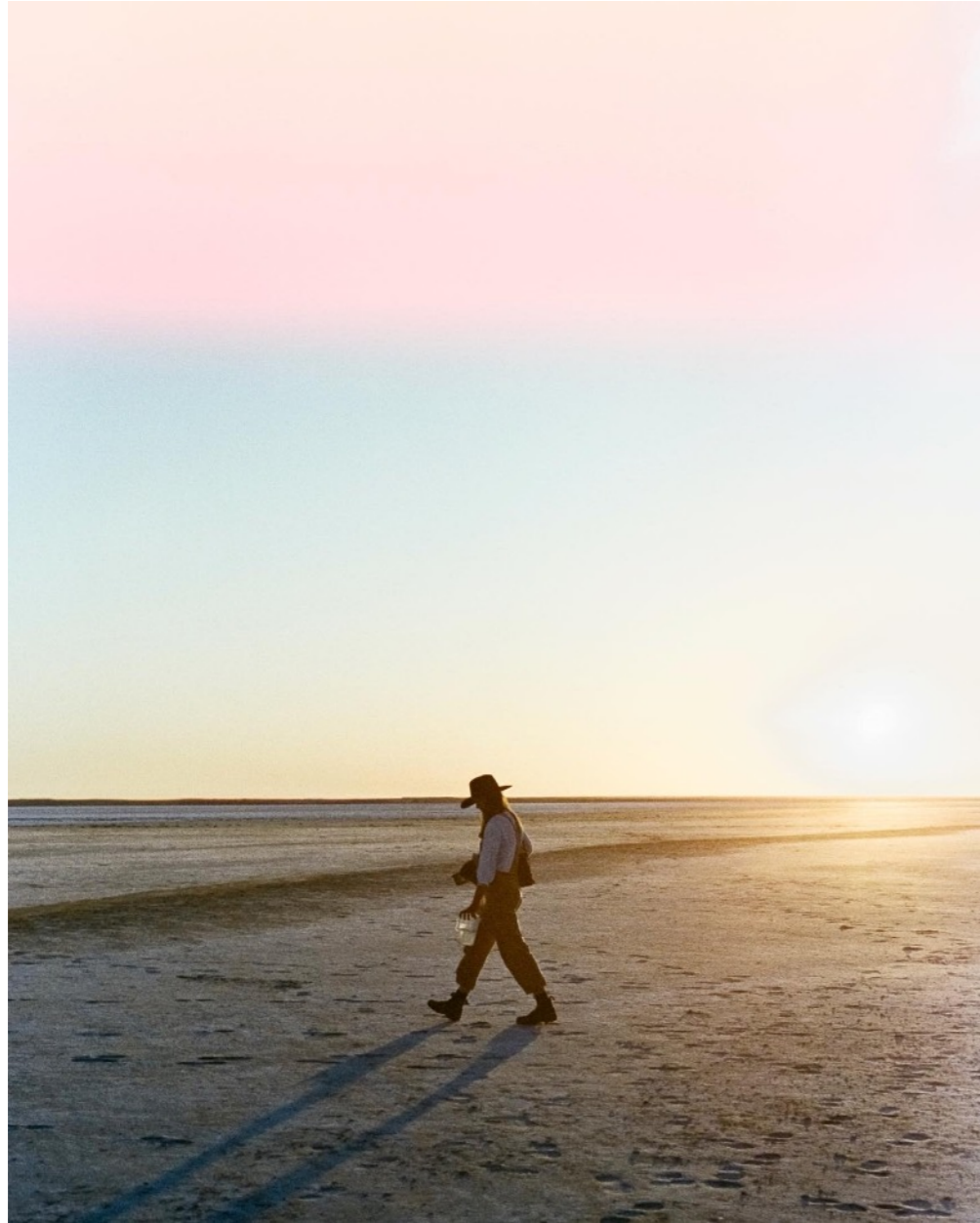
Salt includes works from a recent trip across Australia, travelling from the East Coast (the Yuin Nation & Arakwal Country) to Kati Thanda - Lake Eyre (Arabana Country).

These are places where a quiet magic resonates; where the water leaves the blood sparkling in your veins; where the horizon disappears and the sound of nothingness compresses around you. Places where you lie on your back and feel the relief of your insignificance under the brittle diamond stars.

In her practice Sammy Hawker looks at ways to co-create imagery with these places she is working. Many of the photographs in this show have been processed in the location they were captured and exposed to traces of salt found within the site (ocean water, salt crust).

When processing photographic negatives with salt, the corrosive properties lift the silver emulsion and the representational image is rendered vague.

Still, an essence of the site is introduced to the frame as the vibrant matter paints its way onto the negative, a reminder of the dynamic agency of the more-than human, the unresolved mysteries that exist around us and the resonance of the deeper forces that will so creatively interrogate and transform a photograph.



The artist on site, working with Kati Thanda - Lake Eyre (Arabana Country).  
photo credit: Anna Hutchcroft.

## KEY DETAILS

**EXHIBITION DATES:** February 9 - March 25, 2023

**EXHIBITION OPENING:** 6pm Friday 10 February

**WHERE:** The Mixing Room Gallery at Thor's Hammer, 10 Mildura St,  
Griffith, ACT.

**GALLERY HOURS:** Monday - Friday 8-5pm  
Saturdays 9-1pm

**ENTRY DETAILS:** No tickets or bookings required to view the exhibition.  
Bookings are required to **attend the opening night.**

**ENQUIRIES:** [02] 6282 9900 | [hammer@thors.com.au](mailto:hammer@thors.com.au)



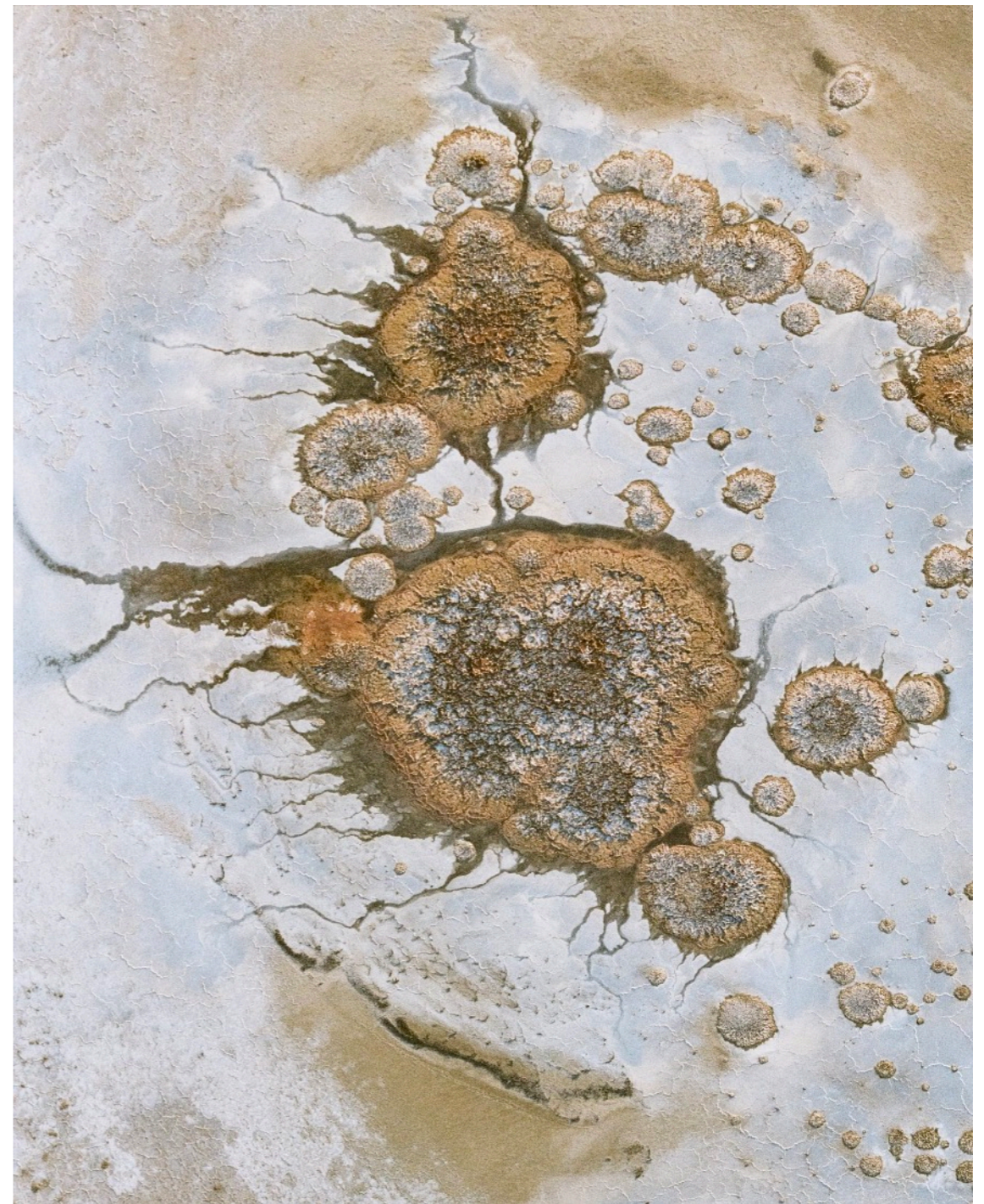


**1. Voices [Kati Thanda - Lake Eyre], 2022**

pigment ink printed on archival Hahnemühle Photo Rag 308gsm

edition of 5 + 2AP [110cm W x 136cm H]  
\$3800 unframed, \$4500 framed

A1 edition of 10 + AP [59.4cm W x 84.1cm H]  
\$1100 unframed, \$1380 framed



**2. Kati Thanda - Lake Eyre [From the Skies #1], 2022**

pigment ink printed on archival Hahnemühle Photo Rag 308gsm

edition of 5 + 2AP [110cm W x 136cm H]  
\$3800 unframed, \$4500 framed

A1 edition of 10 + AP [59.4cm W x 84.1cm H]  
\$1100 unframed, \$1380 framed





**3. Kati Thanda - Lake Eyre [From the Skies #4], 2022**

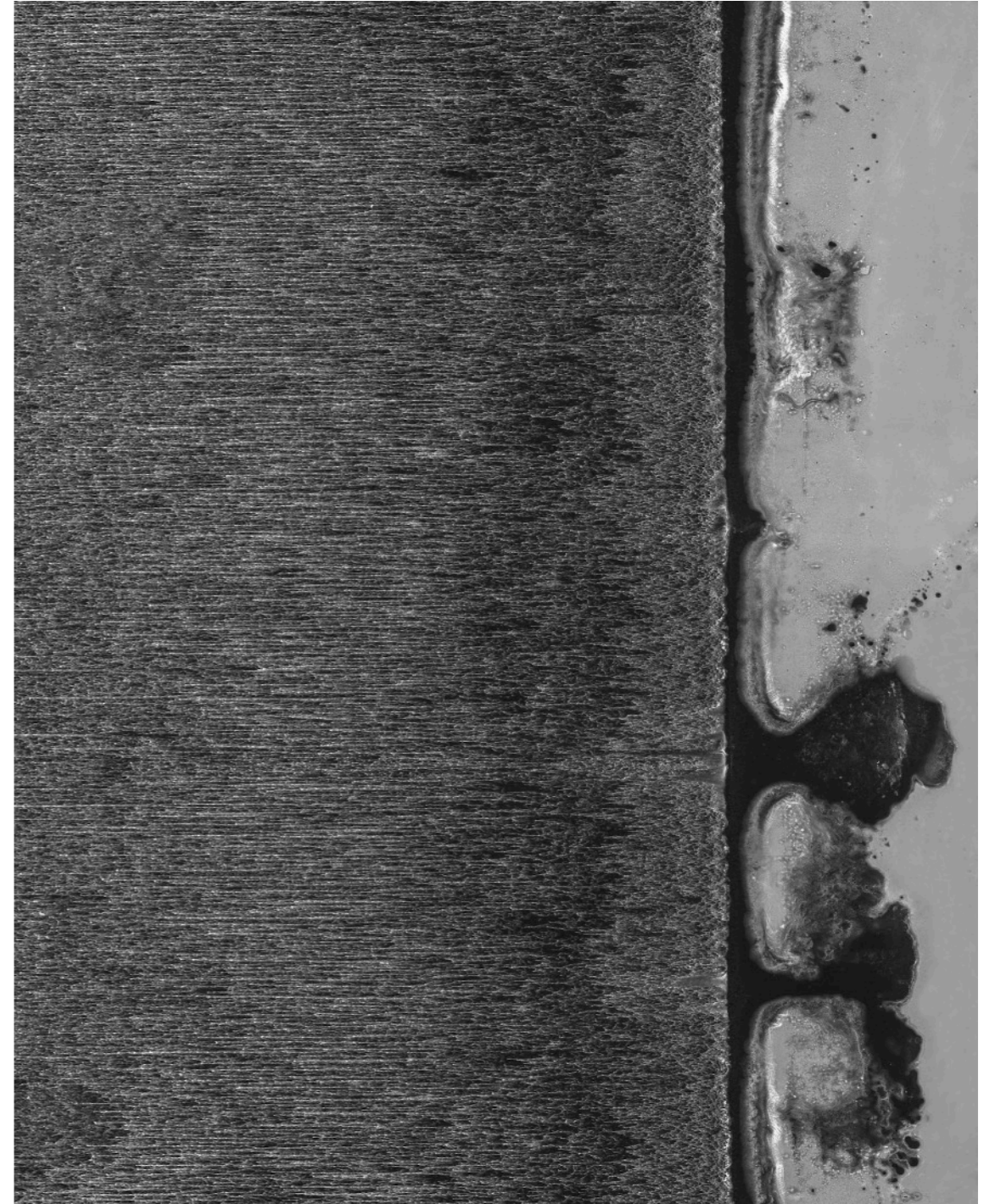
pigment ink printed on archival Hahnemühle Photo Rag 308gsm

edition of 5 + 2AP [110cm W x 136cm H]

\$3800 unframed, \$4500 framed

A1 edition of 10 + AP [59.4cm W x 84.1cm H]

\$1100 unframed, \$1380 framed



**4. Murunna Point, 2021**

pigment ink printed on archival Hahnemühle Photo Rag 308gsm

edition of 5 + 2AP [110cm W x 136cm H]

\$3800 unframed, \$4500 framed

A1 edition of 10 + AP [59.4cm W x 84.1cm H]

\$1100 unframed, \$1380 framed





### 5. Beyond the Veil, 2021

pigment ink printed on archival Hahnemühle Photo Rag 308gsm

edition of 5 + 2AP [136cm W x 110cm H]  
\$3800 unframed, \$4500 framed

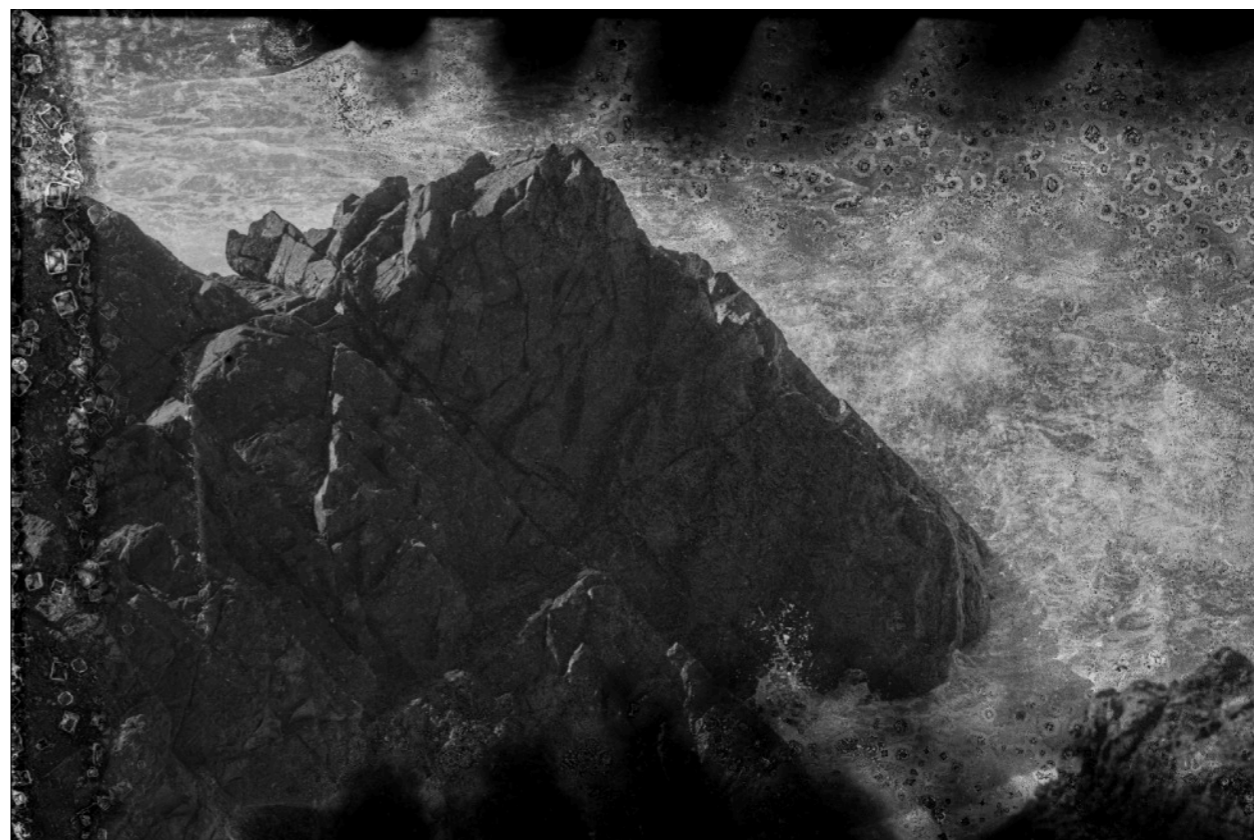
A1 edition of 10 + AP [84.1cm W x 59.4cm H]  
\$1100 unframed, \$1380 framed

### 6. Did I Dream You Dreamt About Me? 2021

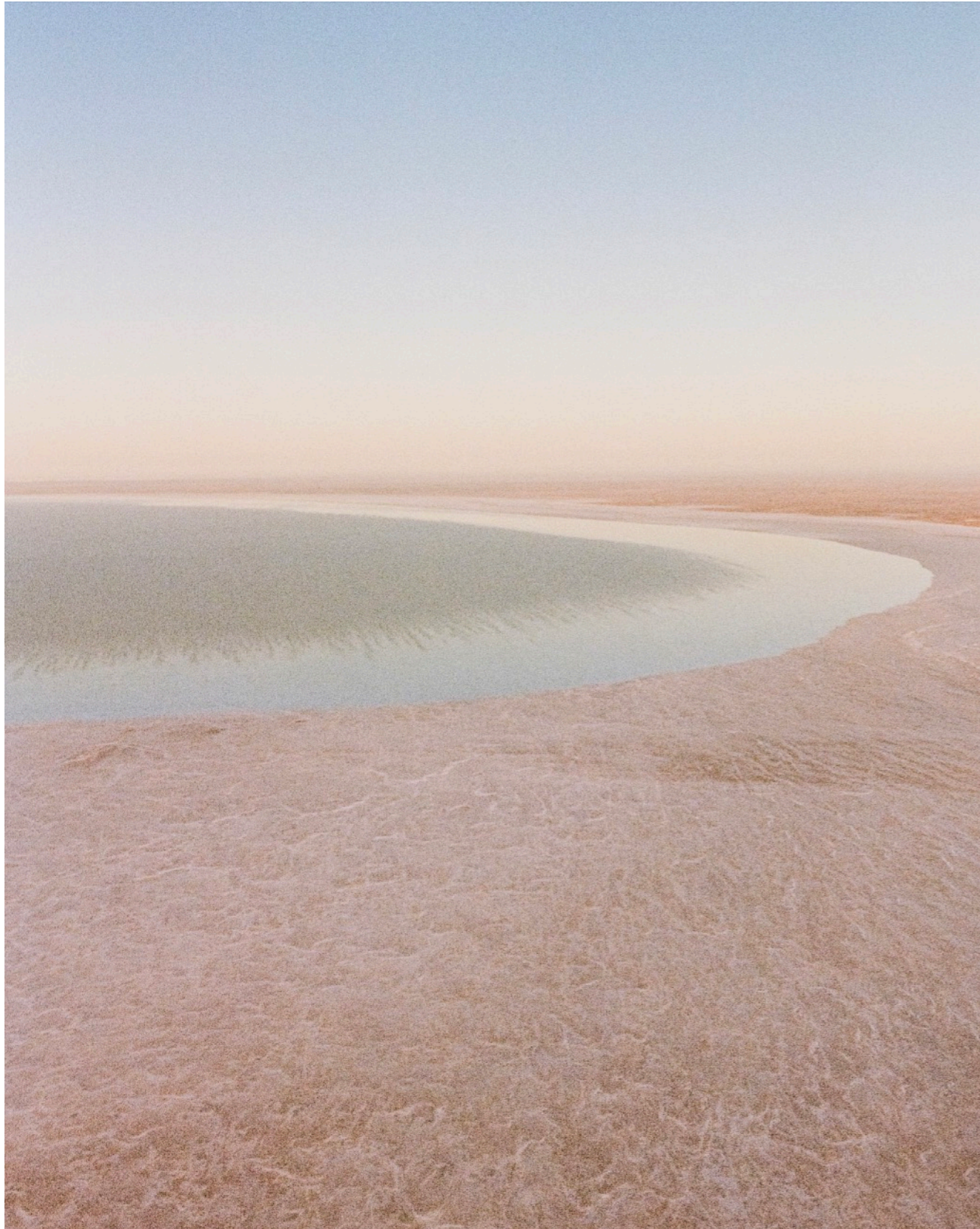
pigment ink printed on archival Hahnemühle Photo Rag 308gsm

edition of 5 + 2AP [136cm W x 110cm H]  
\$3800 unframed, \$4500 framed

A1 edition of 10 + AP [84.1cm W x 59.4cm H]  
\$1100 unframed, \$1380 framed







### **7. Epiphanous, 2022**

pigment ink printed on archival Hahnemühle Photo Rag 308gsm

edition of 5 + 2AP [110cm W x 136cm H]  
\$3800 unframed, \$4500 framed

A1 edition of 10 + AP [59.4cm W x 84.1cm H]  
\$1100 unframed, \$1380 framed





**8. The Scale of Silence, 2022**

pigment ink printed on archival Hahnemühle Photo Rag 308gsm

edition of 5 + 2AP [110cm W x 136cm H]

\$3800 unframed, \$4500 framed

A1 edition of 10 + AP [59.4cm W x 84.1cm H]

\$1100 unframed, \$1380 framed



**9. Kati Thanda - Lake Eyre [From the Skies #3], 2022**

pigment ink printed on archival Hahnemühle Photo Rag 308gsm

edition of 5 + 2AP [110cm W x 136cm H]

\$3800 unframed, \$4500 framed

A1 edition of 10 + AP [59.4cm W x 84.1cm H]

\$1100 unframed, \$1380 framed



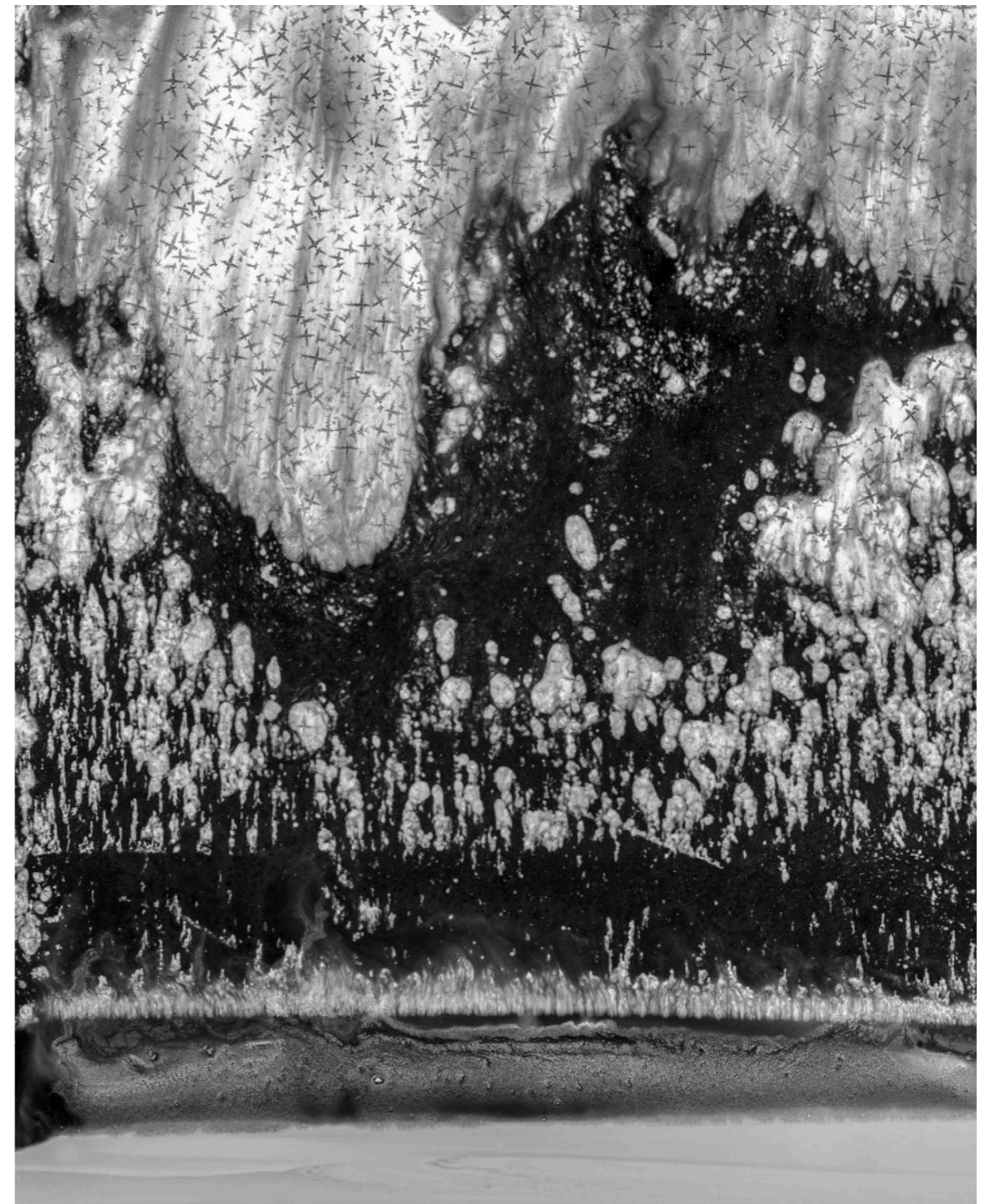


**10. Kati Thanda - Lake Eyre [From the Skies #2], 2022**

pigment ink printed on archival Hahnemühle Photo Rag 308gsm

edition of 5 + 2AP [110cm W x 136cm H]  
\$3800 unframed, \$4500 framed

A1 edition of 10 + AP [59.4cm W x 84.1cm H]  
\$1100 unframed, \$1380 framed



**11. Mount Gulaga, 2021**

pigment ink printed on archival Hahnemühle Photo Rag 308gsm

edition of 5 + 2AP [110cm W x 136cm H]  
\$3800 unframed, \$4500 framed

A1 edition of 10 + AP [59.4cm W x 84.1cm H]  
\$1100 unframed, \$1380 framed





**12. Everything is Waiting for You, 2021**

pigment ink printed on archival Hahnemühle Photo Rag 308gsm

edition of 5 + 2AP [110cm W x 110cm H]  
\$3800 unframed, \$4500 framed

A1 edition of 10 + AP [59.4cm W x 84.1cm H]  
\$1100 unframed, \$1380 framed



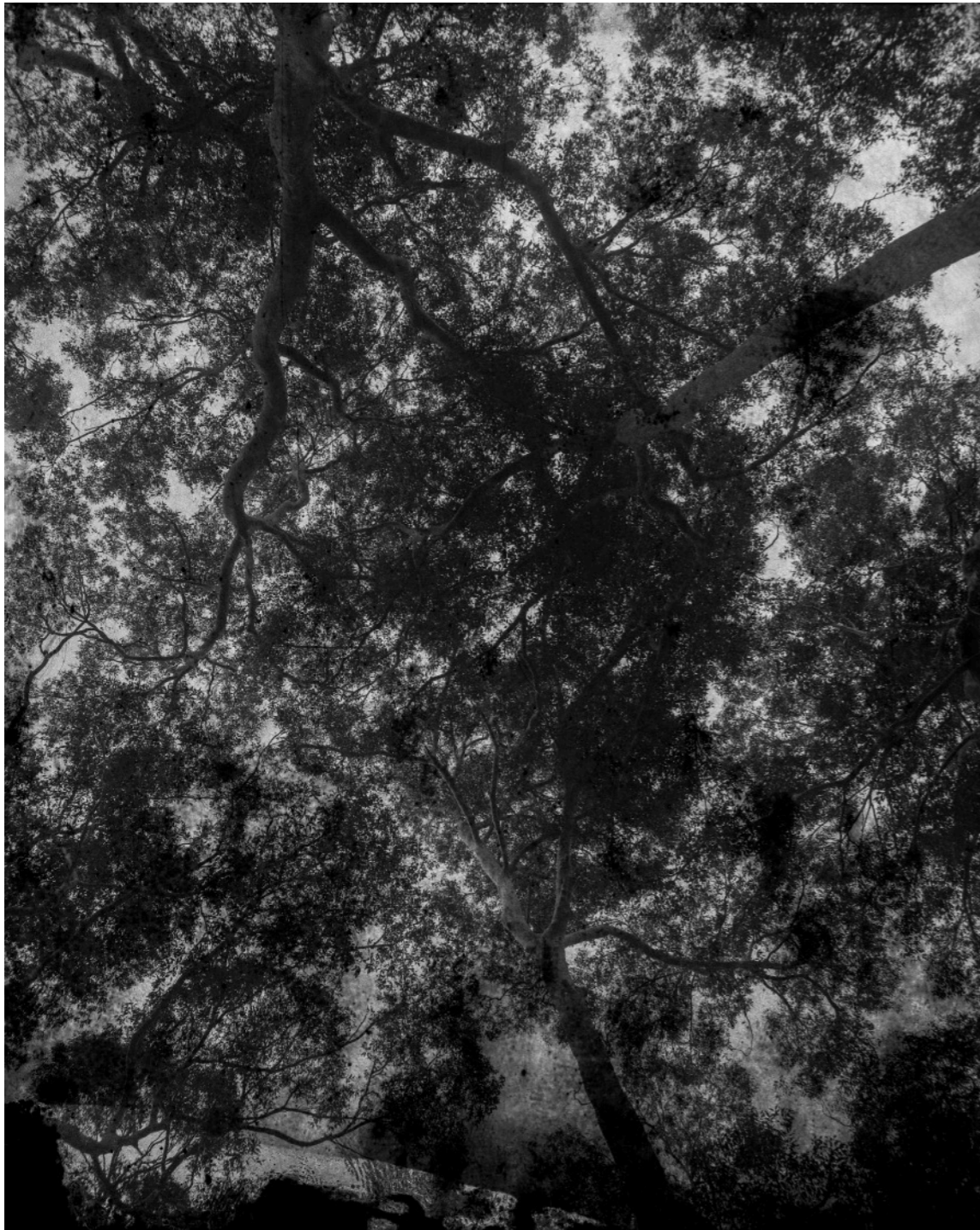
**13. Silver Wind, 2021**

pigment ink printed on archival Hahnemühle Photo Rag 308gsm

edition of 5 + 2AP [110cm W x 110cm H]  
\$3800 unframed, \$4500 framed

A1 edition of 10 + AP [59.4cm W x 84.1cm H]  
\$1100 unframed, \$1380 framed



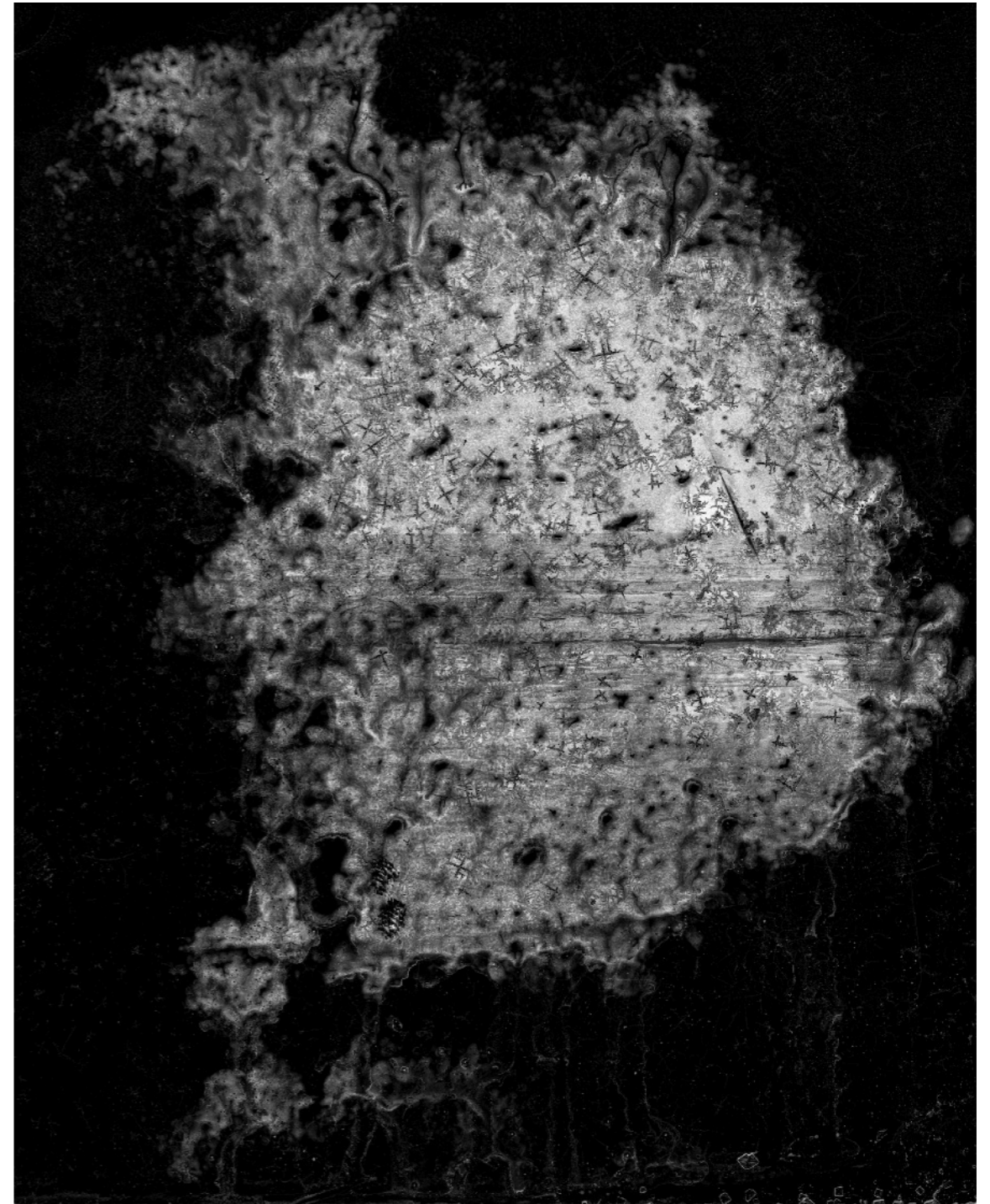


**14. Twisted Skies & Diamond Dreams, 2022**

pigment ink printed on archival Hahnemühle Photo Rag 308gsm

edition of 5 + 2AP [110cm W x 136cm H]  
\$3800 unframed, \$4500 framed

A1 edition of 10 + AP [59.4cm W x 84.1cm H]  
\$1100 unframed, \$1380 framed



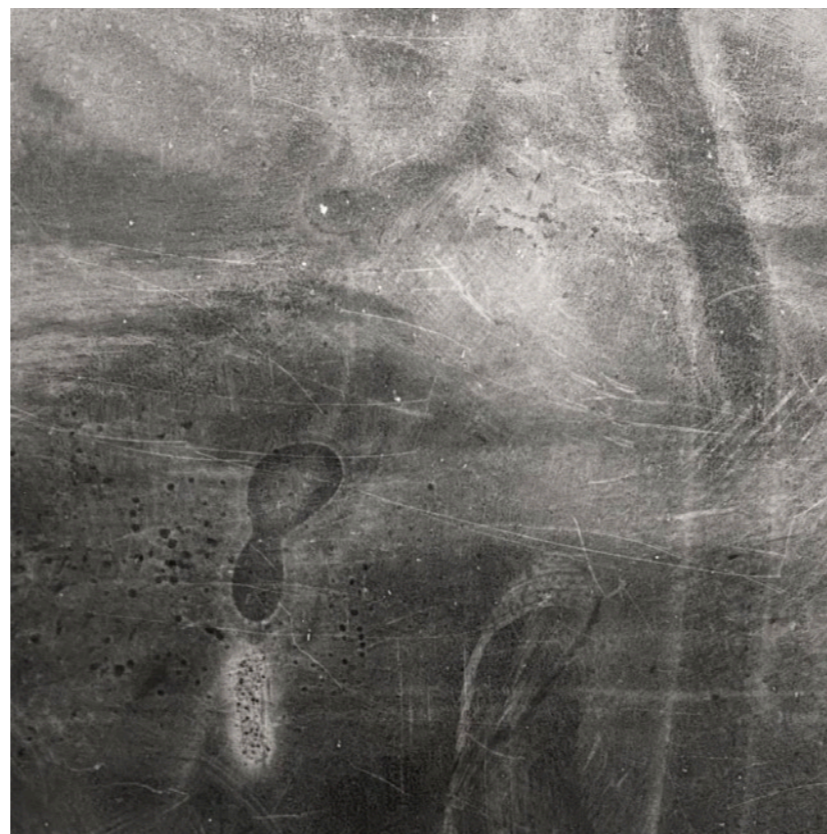
**15. Dark Crystals, 2021**

pigment ink printed on archival Hahnemühle Photo Rag 308gsm

edition of 5 + 2AP [110cm W x 136cm H]  
\$3800 unframed, \$4500 framed

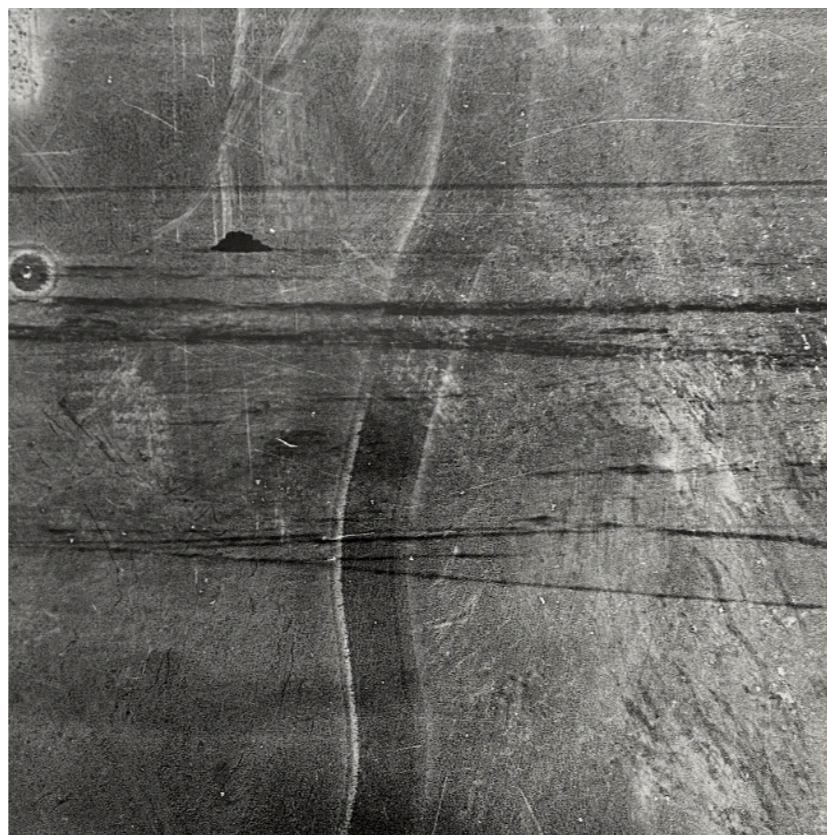
A1 edition of 10 + AP [59.4cm W x 84.1cm H]  
\$1100 unframed, \$1380 framed





**16. Broulee Salt Sketch [Details], 2020**

printed by the artist in the darkroom on  
Multigrade FB.



series of 4 prints [each 20.32cm W x 25.4cm H]  
\$900 unframed, \$1200 framed



## Contributions:

The artist would like to acknowledge the Traditional Custodians of the places that the works in this series were created. 5% of the artist's profits will be contributed back to organisations caring for these places, supporting the vitality of culture, community and Country.

### *For works created on Arabana Country:*

5% of profits will be contributed to The Friends of Mound Springs. This group works closely with Arabana rangers in the conservation and management of the mound springs of the Great Artesian Basin. The objective of FOMS is to ensure that the natural and cultural heritage features of the springs are conserved and, in cases, enhanced.

<https://www.friendsofmoundsprings.org.au/>

### *For works created on Arakwal Country:*

5% of profits will be contributed to the Arakwal Corporation. This corporation is responsible for representing the interests of the Arakwal people and the continued care of and cultural connection to Country, The contributions from this exhibition will go specifically towards the Arakwal Corporation *Back to Country* days.

<http://arakwal.com.au/>

### *For works created within the Yuin Nation:*

5% of profits will be contributed towards The Little Yuin preschool in Wallaga Lake as well as the facilitation of art workshops with the local community. The Little Yuin preschool has been successfully operating for 20 years and run by a volunteer Aboriginal management committee. Some of its aims include providing a culturally appropriate venue for early educational programs, increased well-being of children and and enhanced capacity to identify community needs.

<https://littleyuinpreschool.com.au/>

